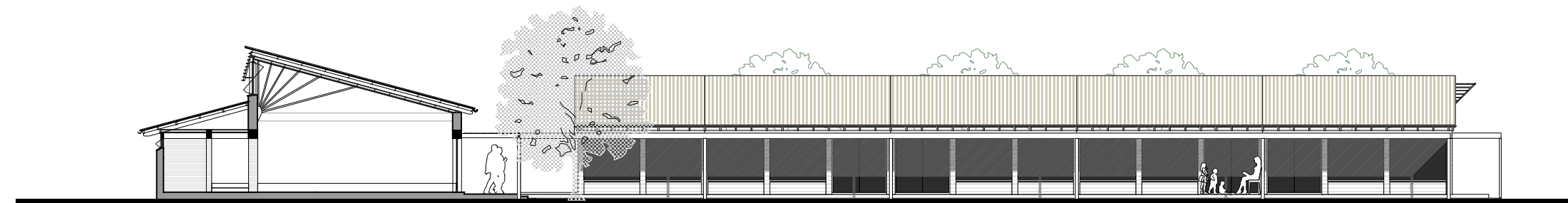


SOUTH ELEVATION OF CLASSROOMS



NORTH ELEVATION OF CLASSROOMS
(section through hall)





HaysonWardMiller Architects

7 Downing Place, Cambridge, CB2 3EL, UK

T: 01223 578545 F: 01223 351955

E: info@haysonwardmiller.co.uk

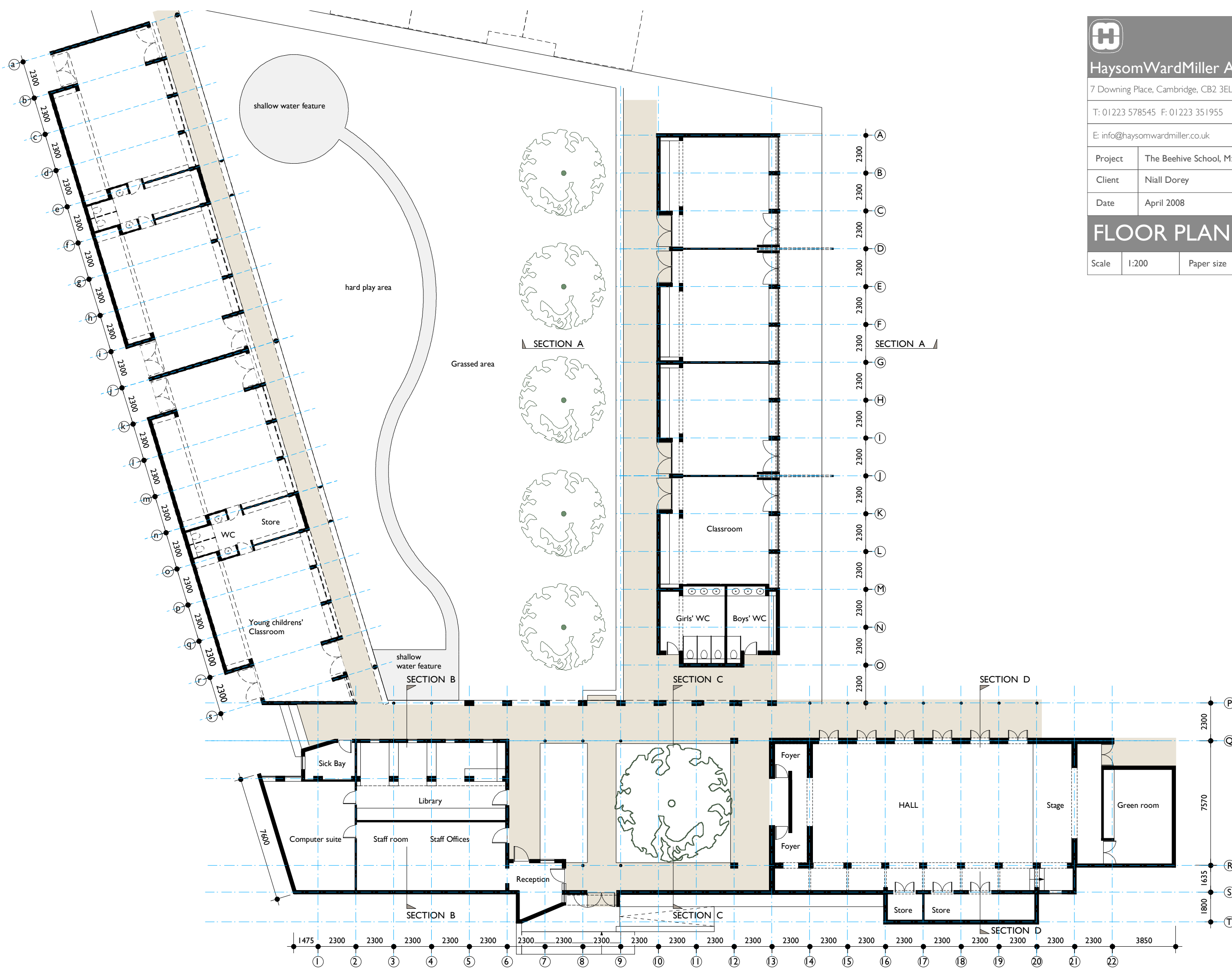
Project The Beehive School, Mzuzu, Malawi

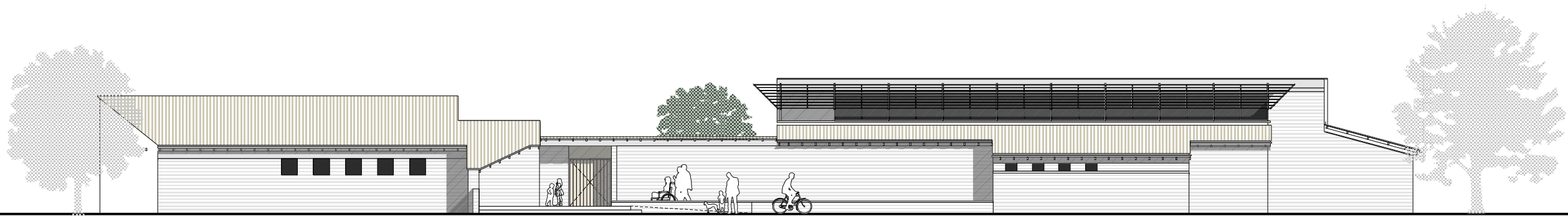
Client Niall Dorey

Date April 2008

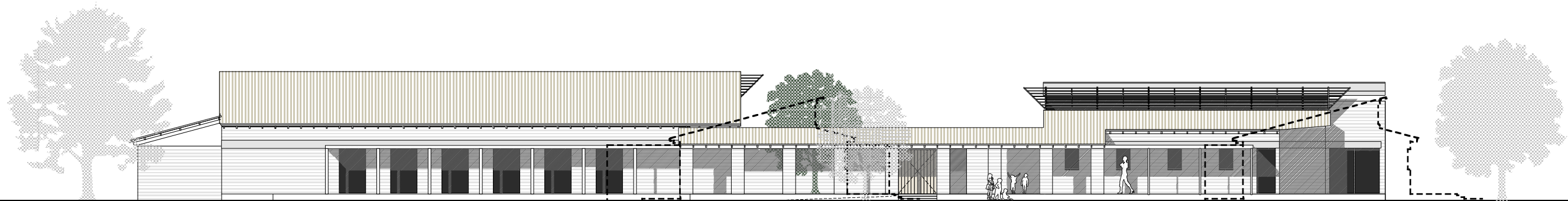
FLOOR PLAN

Scale 1:200 Paper size A3

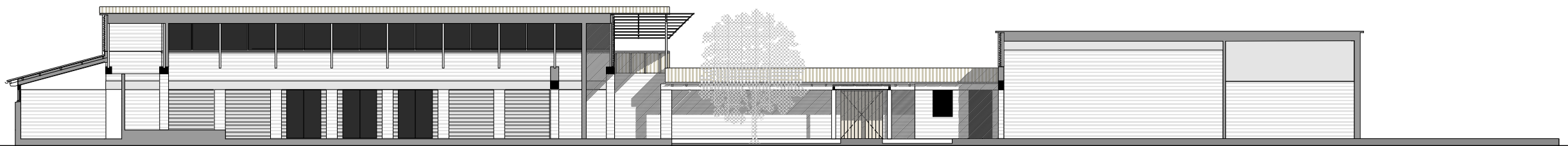




EAST ELEVATION



WEST ELEVATION OF HALL
(class rooms shown dotted)

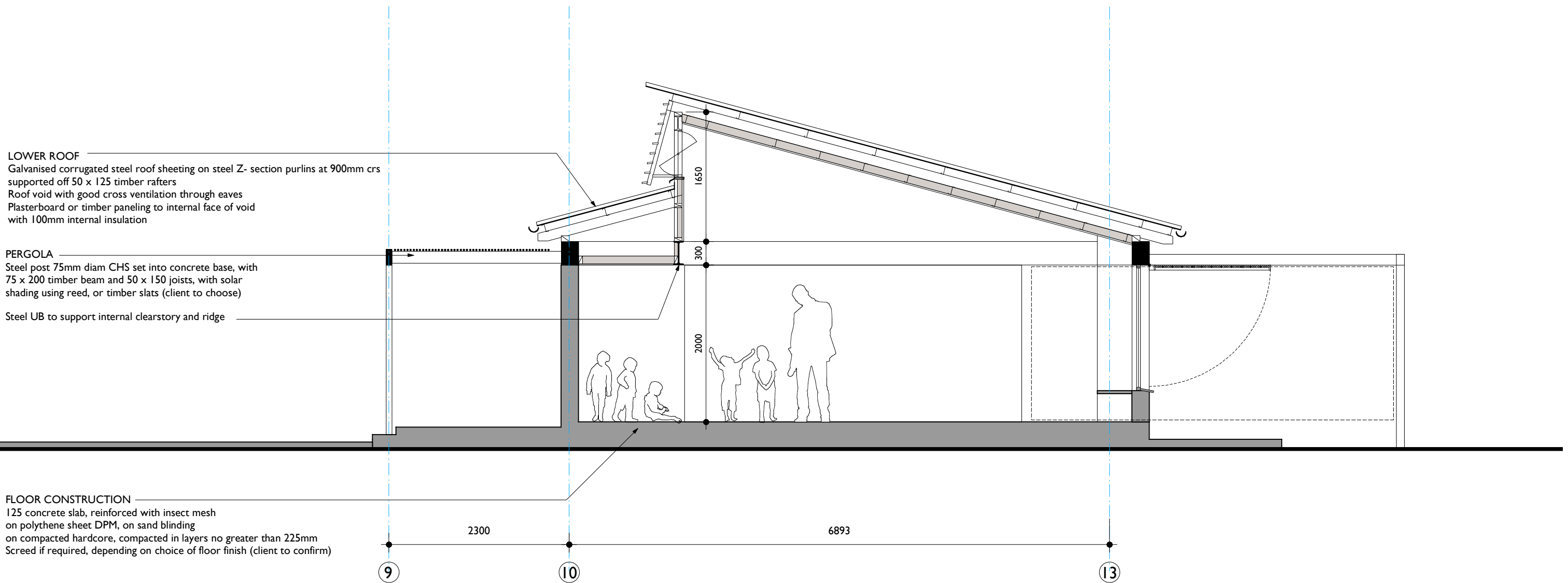


LONG SECTION
through hall, entrance court and library



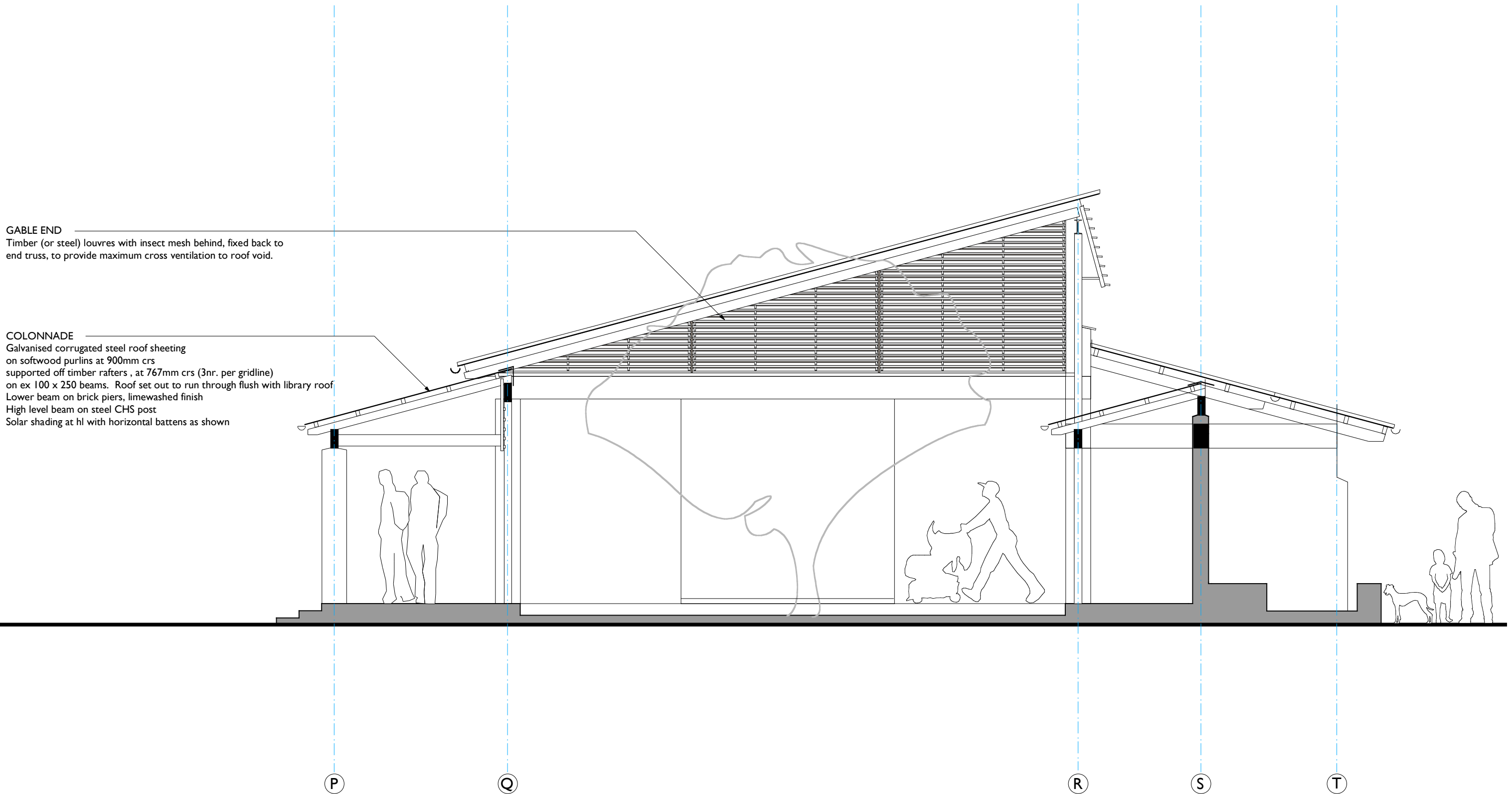
NOTE

All structural components are to be approved by structural engineer. Follow engineers specification always and report any discrepancies to architect.



NOTE

All structural components are to be approved by structural engineer. Follow engineers specification always and report any discrepancies to architect.



NOTE

All structural components are to be approved by structural engineer. Follow engineers specification always and report any discrepancies to architect.

ROOF CONSTRUCTION

Galvanised corrugated steel roof sheeting on steel Z section purlins at 900mm crs supported mid span off fan shaped timber struts as drawn at 2300mm crs (located on each gridline) supporting ceiling joists running perpendicular to trusses at 1500 crs to support sw battens at 900 crs to carry t&g, knott free ceiling boarding running lengthways 75mm mineral wool insulation laid above ceiling provide ventilation to eaves, ridge and gable ends as described

WALL CONSTRUCTION

Locally sourced bricks for solid load bearing walls, in hall generally brick and a half thick, either solid or with concrete filled cavity. Reinforced concrete ringbeams, 300mm deep, at levels as shown. Generally walls to be flush pointed with limewash externally and at high level internally, and painted with emulsion below lower ringbeam.

FOUNDATION CONSTRUCTION

To approval of building inspector following assessment of local ground bearing capacity. See also Section A.

